

S 35 MDT²⁰⁰⁰



BRONTO SKYLIFT



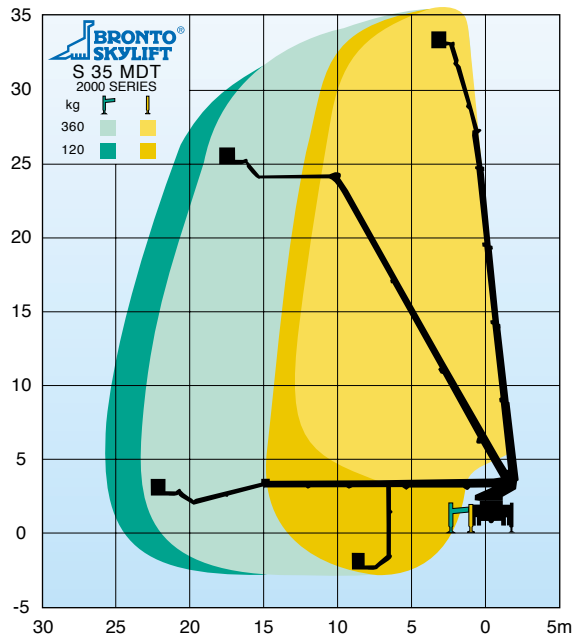
TECHNICAL SPECIFICATION

Working height	35.0 m
Height to working cage floor	33.0 m
Working outreach	23.3 - 25.8 m
Outreach to cage corner	22.6 - 25.1 m
Safe working load	360 - 120 kg
Rotation	±280°
Transport height (depending on chassis)	3.4 m
Transport length (depending on chassis)	8.9 m
Transport width	2.5 m
Outrigger width (C/C), front	5.4 m
rear	5.4 m
Total weight, (without chassis)	9.3 ton
Working cage	0.9 x 2.0 x 1.1 m
GVW	16 - 18 ton

S 35 MDT²⁰⁰⁰

STANDARD FEATURES

- Electro-hydraulic control system
- Bronto⁺
- Joystick control levers for boom movements in the cage, push button controls at the turntable
- Electro-hydraulic cage levelling system
- Doubled safety system
- Slow speed movement before meeting outreach limit
- Safety switches for extension chains
- Engine start prevention gear connected
- Automatical interlock system to prevent the lifting of the booms when the outriggers are in transport position
- Signal lights for outriggers and boom transport position in driver's cab
- Back-up system for hydraulics by battery pump
- Push button in the cage for sound signal
- Turntable rotation approx ±280° electrically limited
- Changeable working cage
- Cloth covered turntable
- Aluminium decking with hot dip galvanized frame
- Ladder type step with railing (one side)
- Outrigger ground pads with brackets
- One locker at the rear of the vehicle with hinged door for outrigger control panel
- Flashlights to outriggers
- Side lights (yellow)
- Wheel chocks with brackets
- Plastic mudguards for rear axle
- Mounting on chassis



Alterations reserved.