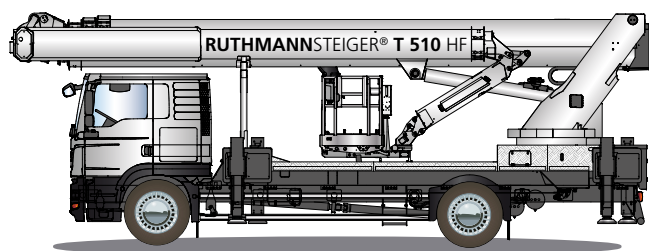





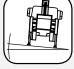







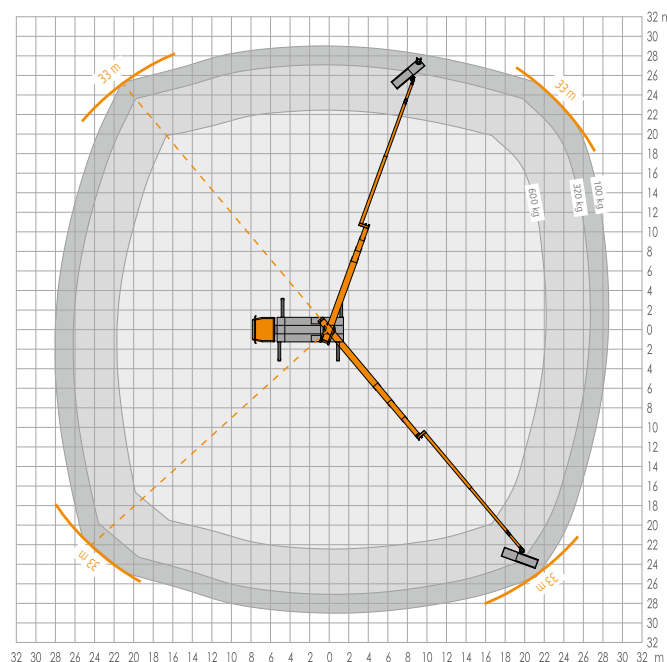
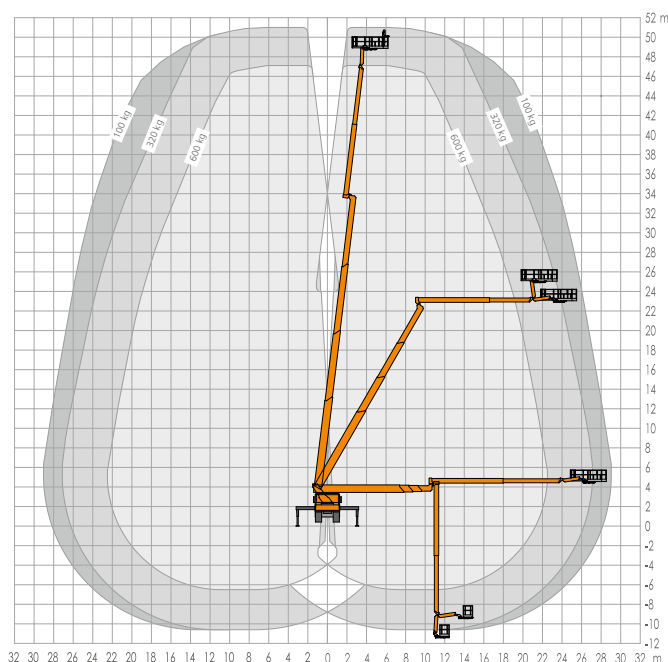


# STEIGER® T 510 HF



| RUTHMANNSTEIGER® T 510 HF  |                        |   |   |
|--|------------------------|---|---|
|    | Working height         | 51.00 m   |  Total height $\geq 3.75$ m                        |
|    | Lifting height         | 49.00 m   |  Total length 10.40 m                              |
|    | Outreach*              | 33.00 m   |  Permissible inclination $2^\circ$                 |
|  | Working cage size      | 2.42 x 0.97 m   |  Permissible total weight $\leq 18,000$ kg       |
|  | Max. working cage size | 3.82 x 0.97 m   |  Range of rotation $500^\circ$                   |
|  | Working cage load      | 600 kg  |  Swivelling angle of the jib/RÜSSEL® $220^\circ$ |
| * depending on load, angle of rotation and outfit                                  |                        |  | Swivelling angle of upper boom $180^\circ$  |

more information: [www.ruthmann.de/t510hf](http://www.ruthmann.de/t510hf)



All data has been included without warranty. All measurements and weights are approximate and refer to the standard basic execution. Technical alterations reserved. STEIGER®, GELENKSTEIGER®, RÜSSEL® and CARGOLOADER® are registered trademarks of RUTHMANN GmbH & Co. KG