



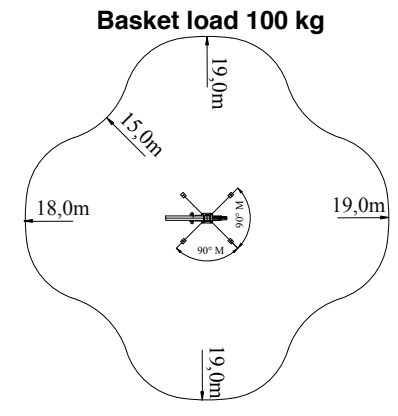
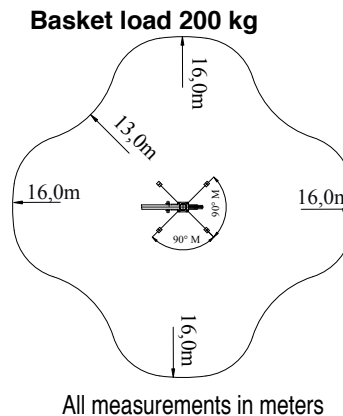
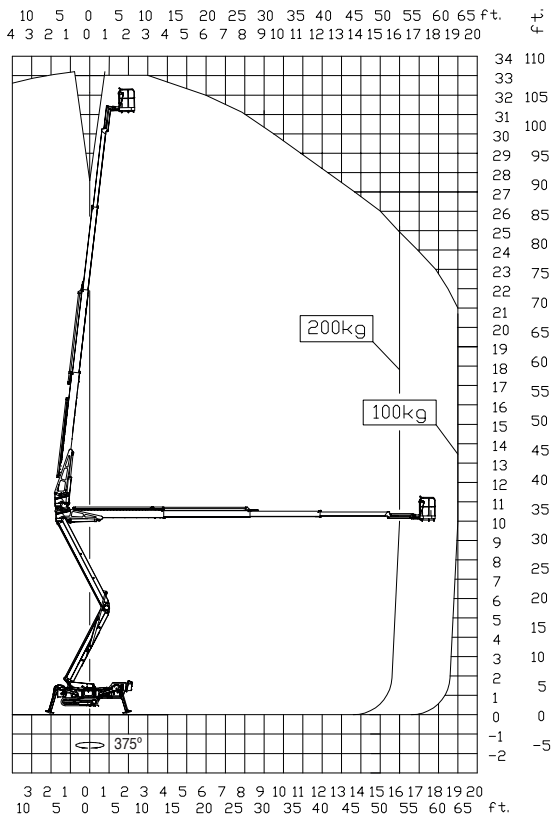
**HIRE**

# FS330Z Vario FALCON

|                                 |                     |
|---------------------------------|---------------------|
| <b>Model:</b>                   | <b>FS330Z Vario</b> |
| Working height:                 | 33 m                |
| Maximum reach:                  | 15 m - 19 m         |
| Jib arm:                        | 110°                |
| Basket load:                    | 200 kg              |
| Aluminium basket:               | (0,8 x 1,4 m)       |
| Basket rotation:                | +/- 90°             |
| Turret rotation:                | 375°                |
| Dimensions (transport position) |                     |
| Total height:                   | 1,99 - 2,25 m       |
| Total length:                   | 7,30 m              |
| Total width (min):              | 1,25 - 1,58 m       |
| Gradability (standard):         | 20°/37%             |
| Weight approx.:                 | 6.450 kg            |



## FS330Z Vario



All measurements in meters

### Standard equipment:

- Automatic stability & outreach control
- Computer controlled (can-bus)
- Proportional control of functions
- Self-propelled 2 speed selection
- Battery powered with charger 360Ah
- Jib-arm 110°
- 375° turret rotation with integrated stop
- +/-90° basket rotation
- Electronic checking of power system (PLC)
- Manual pump system for emergency lowering
- Ability to self-load onto trucks and trailers
- Variable width, hydraulic (1,25m - 1,58m)
- Minimum width only 1,25m
- Space for tools, etc. in basket
- Storage room in chassis with key lock
- Diesel engine, Kubota 3 cyl. 21,7 kW
- Wireless remote control of all functions
- 110V/220V AC power supply in the basket
- Non marking crawlers
- Individual setting of each outrigger
- Slope alarm
- Falcon Service Tool (Remote access via laptop)

### Options:

- Hazard lights kit (strobe lights, working lamp)
- Protection kit (enhanced shields/covers)
- 400V AC direct powered electro motor
- Autosetting / levelling
- Special outrigger footplates
- Special colour
- Dual charging power 110V and 220V
- Anti entrapment device
- GSM module for remote access and monitoring