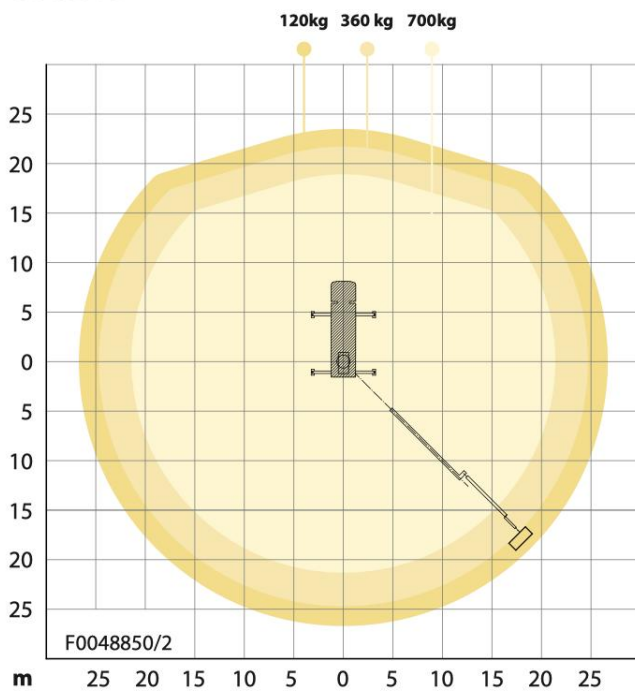
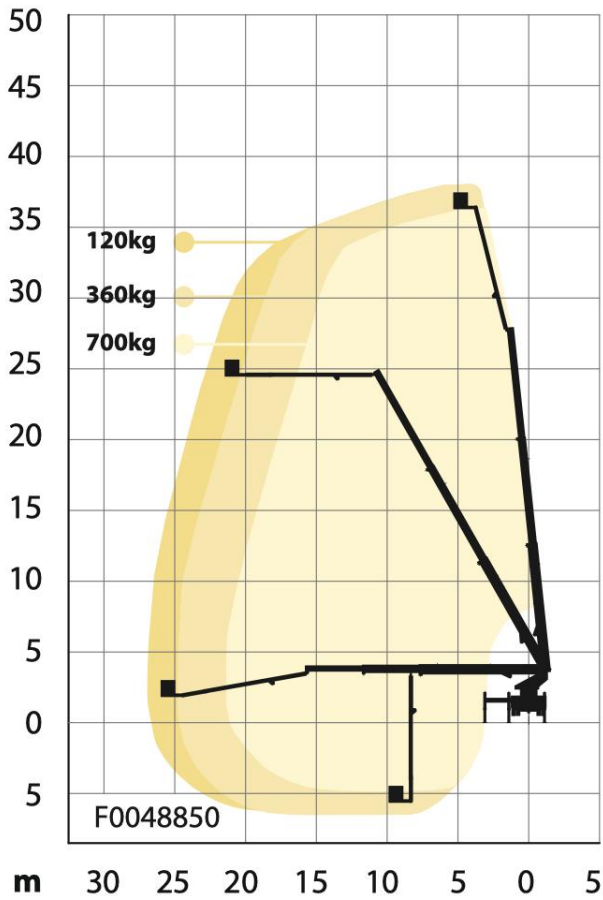


S38XDT



- | | |
|---------------------|----------|
| 38 m | 2 x 90° |
| 27 m | 2 x 280° |
| 36 m | 3.7 m * |
| 700 kg | <10 m * |
| 1,1 x 2,4 m (3,7 m) | 18 t * |

* depending on chassis

Diagrams presented with standard configuration. Variations apply.